

Scarsdale Strategic Mobility + Placemaking Plan

Working Group Meeting 3
October 25, 2022



Agenda

- Project Overview
- Incremental Approach to Implementation
- Project Aesthetics
- Results & Feedback



Project Overview



Project Overview

Placemaking

- Spencer Place
- Boniface Circle
- Park access

Mobility

- Popham Road
- Fox Meadow Road
- Crane Road
- Sprague Road



Walk Audit & Site Visit

Village Center Walk Audit



Sprague Road Site Visit



Additional Meetings

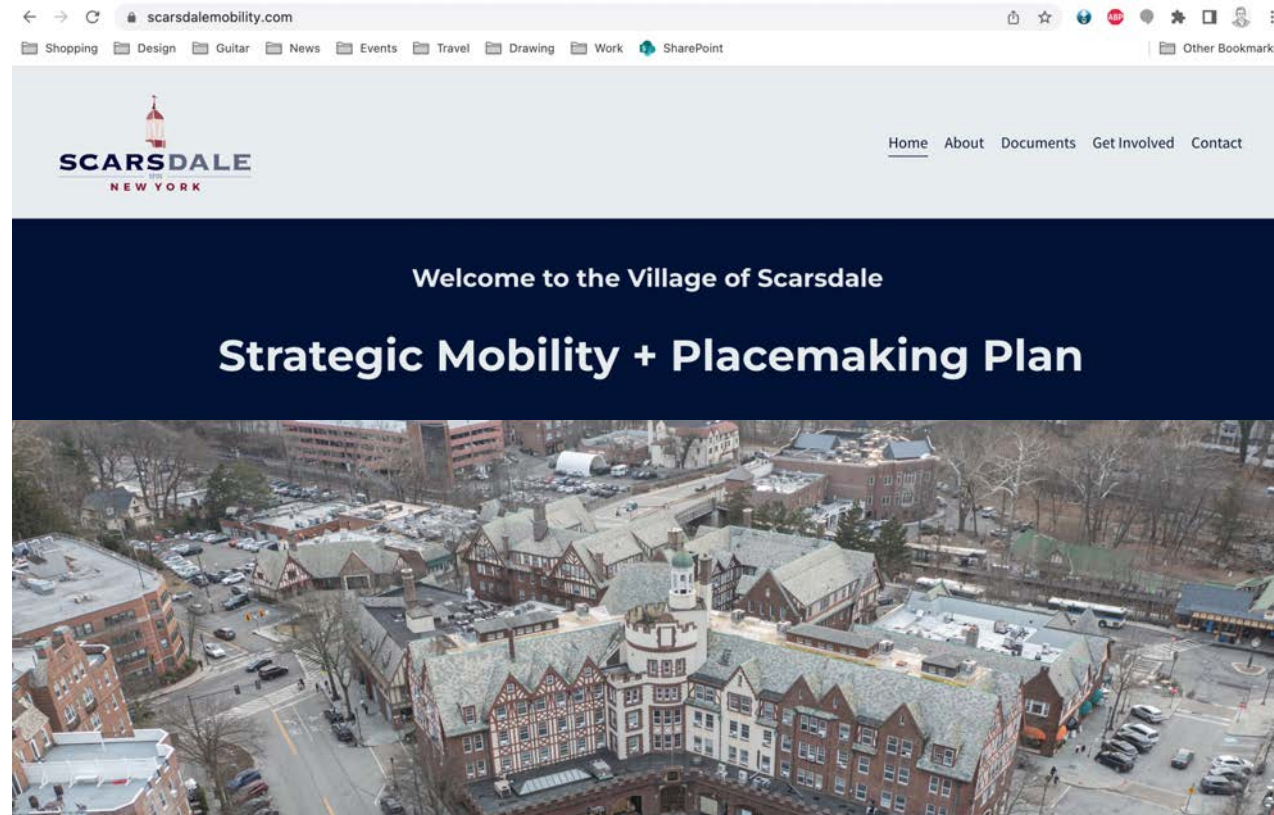
- Kick-off Meeting
- Working Group #1
- Working Group #2
- Design Session
- Virtual Public Meeting #1
- Virtual Public Meeting #2
- Virtual Public Meeting #3
- Working Group #3



Explore how to...

- Increase pedestrian and cyclist safety
- Provide access for all users
- Improve traffic flow and circulation
- Activate public spaces
- Incorporate sustainability
- Balance parking needs

Project Overview



www.scarsdalemobility.com

Engage | Design | Advance

Incremental Approach to Implementation



Jersey City, 2013



Jersey City, 2019



Jersey City, 2022



Jersey City, 2022

Jersey City RESTAURANT WEEK
July 17-31, 2022
Great Dining Offers from
Grove Street to Greenville



Tactical Urbanism

*A municipal- and community-led approach to implementation that uses **low-cost materials** and **scalable interventions** to create long-term change*

Quick Build (1 day)



Pilot Project (up to 2 weeks)



Interim Design (1-5 years)



Long-term Design (5+ years)



Project Aesthetics

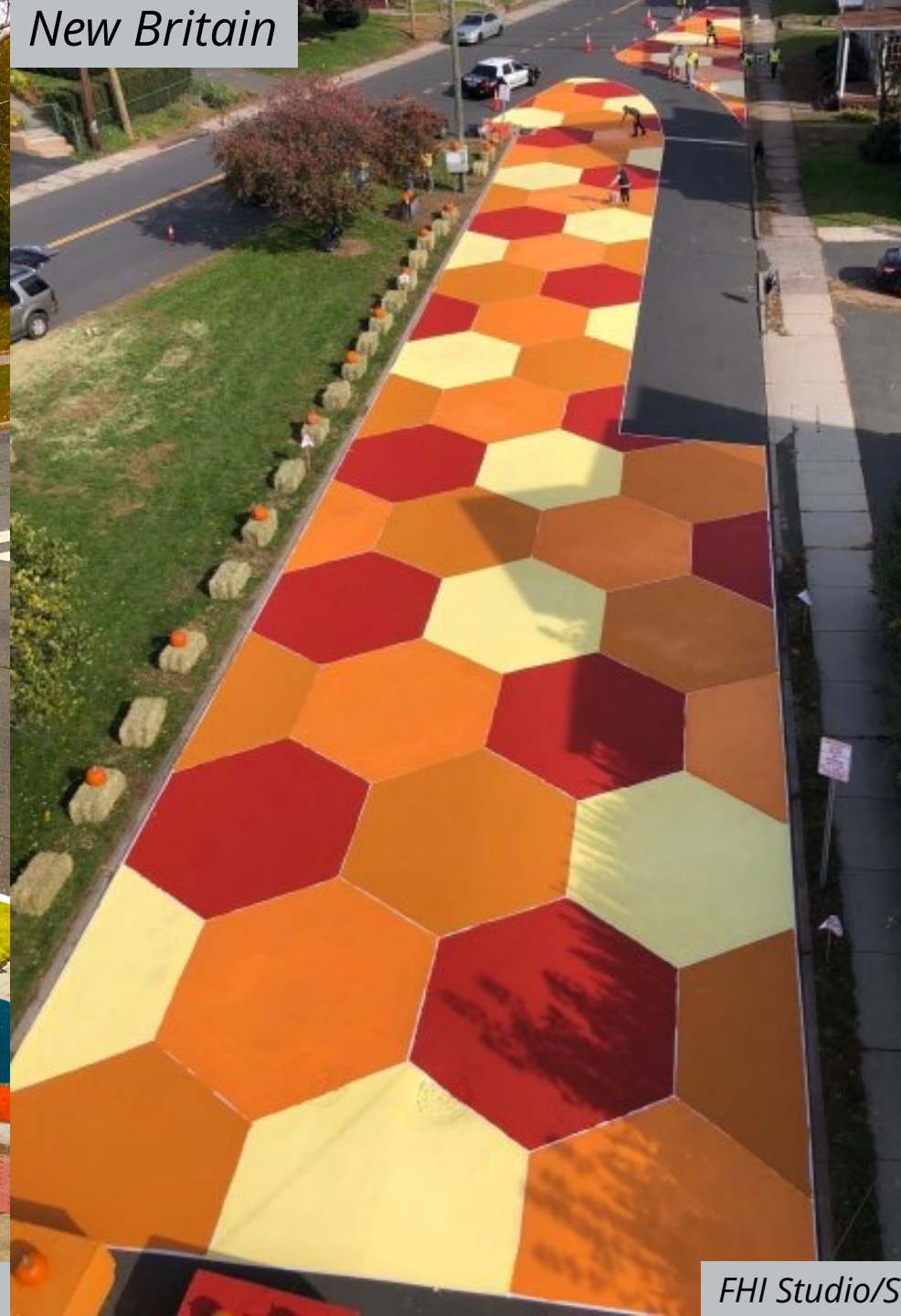


Jersey City



FHI Studio/Street Plans

New Britain



FHI Studio/S



Mosa Beach, CA



Street Plans

Chattanooga, TN



Street Plans



Scarsdale Place Quality



Results & Feedback



Does It Work?

Simsbury, CT

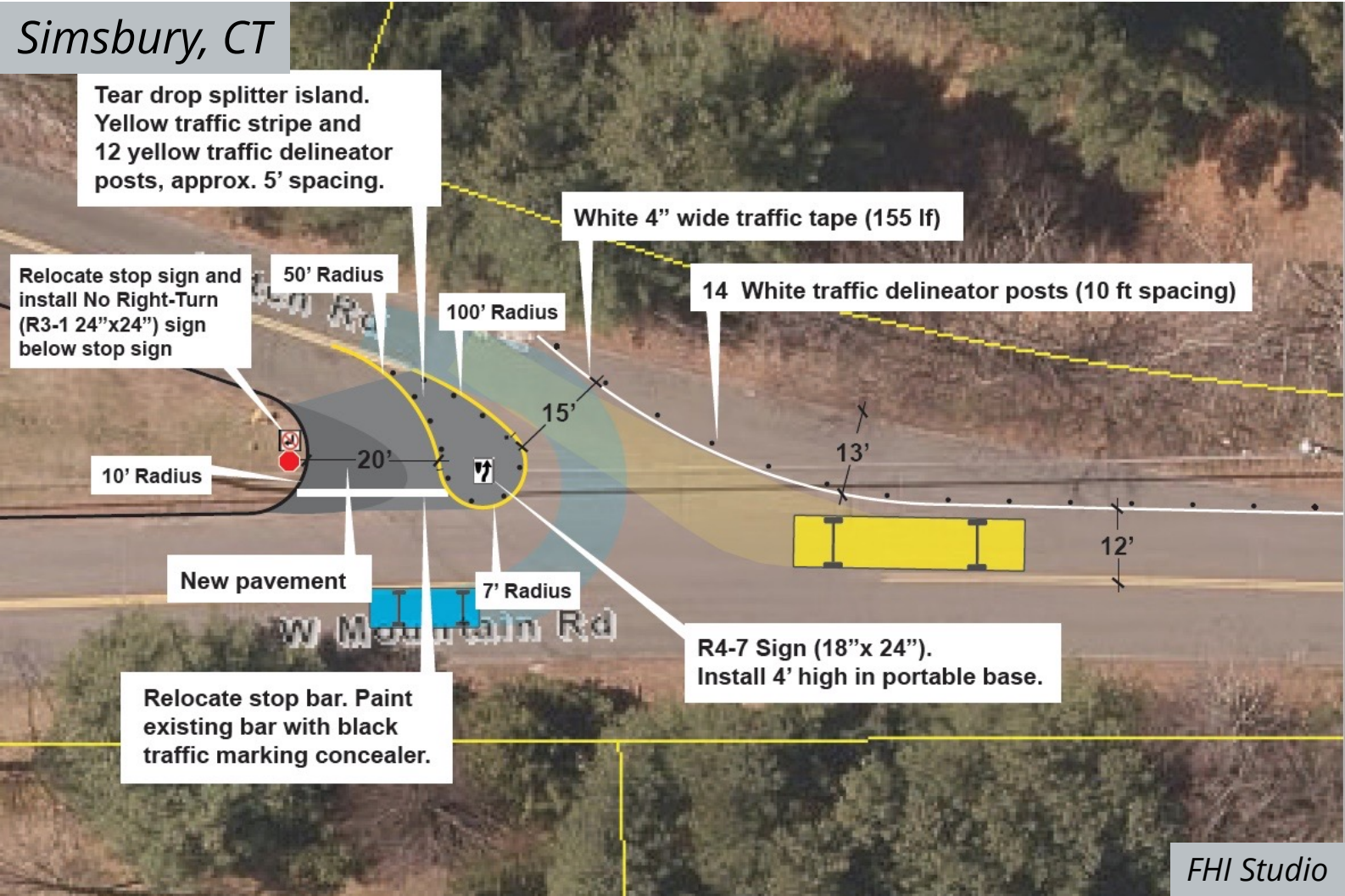


Source: Town of Simsbury, CT

Does It Work?

	Before	After
Max Speed (MPH)	55	48
Average Speed (MPH)	31.1	24.8

Does It Work?







Collecting Feedback





What would encourage
you to **walk more**
in your neighborhood?

What did we hear?

What would encourage you to **WALK** more in your neighborhood?

#JCWalks

A large blue board with a grid of white speech bubble shapes. Several speech bubbles contain handwritten notes in black ink. The notes include:

- AWESOME SAUCE
- MORE PLANTS
- MORE FLOWERS
- MORE SHOPPING LIGHTS
- MORE WATERING (with arrows pointing to the street)
- KEEP THE PARKING SPOTS MARKED WITH PEPS
- PLEASE WALKING WE NEED MORE LIGHTS
- CROSSWALK IS HARD TO SEE
- THINK YOU'RE USING THE DANGEROUS SIDEWALK
- MORE LIGHTS AND SAFETY SIGNS
- SAFE
- KEEP THE PARKING SPOTS MARKED WITH PEPS
- MORE PLANTS
- MORE FLOWERS
- MORE SHOPPING LIGHTS
- MORE WATERING (with arrows pointing to the street)
- KEEP THE PARKING SPOTS MARKED WITH PEPS
- PLEASE WALKING WE NEED MORE LIGHTS
- CROSSWALK IS HARD TO SEE
- THINK YOU'RE USING THE DANGEROUS SIDEWALK
- MORE LIGHTS AND SAFETY SIGNS
- SAFE
- KEEP THE PARKING SPOTS MARKED WITH PEPS

“That’s the **calmest**
I have ever seen
that intersection.”





“That’s the **safest** I have ever felt crossing that street.”

“How do we make this
permanent?”



Implementation
starts today!



Thank you!

www.scarsdalemobility.com